



HOOGE CRATER CEMETERY

Located beside the infamous Menin Road, when you arrive here the true scale of this cemetery is hidden from view. The reveal is perhaps one of the greatest and most heart-breaking views in any CWGC cemetery.

The fighting here was almost continuous and by the end of the First World War this was a landscape of overlapping shell holes and shattered tree stumps. Some 70 rough wooden crosses marked a small war-time burial ground. In the years after the 1918 Armistice, thousands of servicemen who were recovered from the surrounding fields were laid to rest here, creating the cemetery we see today.

Designed by Sir Edwin Lutyens and Noel Rew, the Stone of Remembrance is placed in an architectural feature that is designed to represent a mine crater, echoing the many craters that scarred the nearby landscape during the war. The Cross of Sacrifice stands sentinel over a vast cemetery that runs downhill to a raised viewing platform that is worth walking down to.

The cemetery register, plan and visitors' book can be found in the left-hand shelter building.



Early post-war photograph of this cemetery © Antony d'Ypres Collection, In Flanders Fields Museum



HOOGE CRATER CEMETERY

COMMONWEALTH
WAR GRAVES

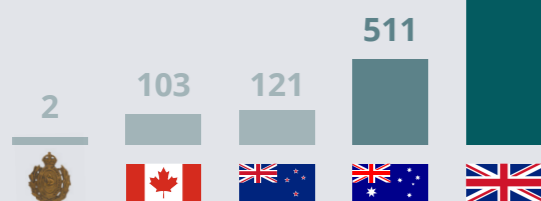


Total number of graves: **5,916**

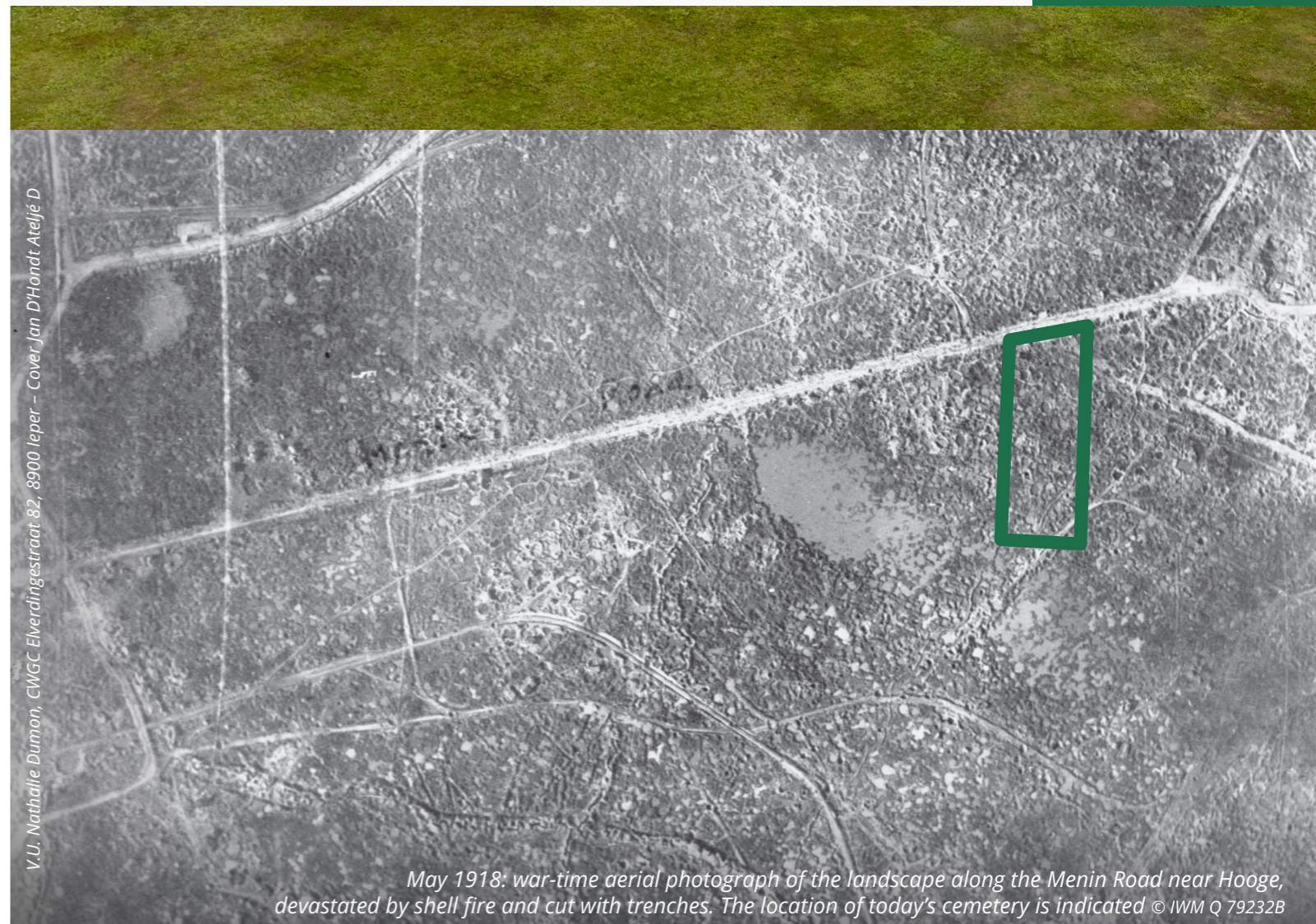
- Identified
- Unidentified

Force nationalities

- West Indies
- Canadian
- New Zealand
- Australian
- United Kingdom



For more information please scan here.



V.U. Nathalie Dumon, CWGC Elverdingerstraat 82, 8900 Ieper - Cover Jan D'Hondt Ateijé D

May 1918: war-time aerial photograph of the landscape along the Menin Road near Hoge, devastated by shell fire and cut with trenches. The location of today's cemetery is indicated © IWM Q 79232B





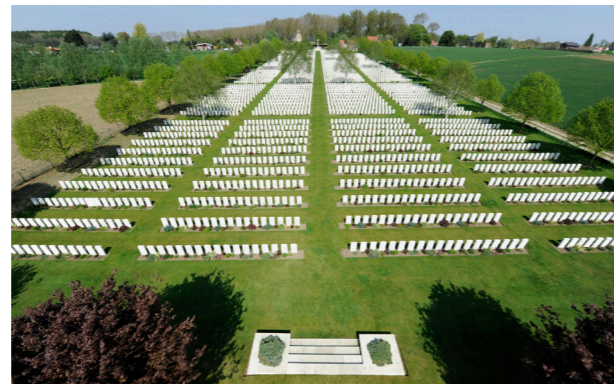
THE REVEREND DAVID HUNTER

Chaplains undertook an important role far beyond simply conducting religious services. They were often a key member of a unit, offering counsel and support to soldiers experiencing war. David Hunter was born in Ireland but grew up in Australia. He volunteered in 1916 and served with the 55th Battalion of the Australian Infantry. He was killed in September 1917 after visiting his battalion in Polygon Wood. He is one of 36 Army Chaplains we commemorate in Belgium. (Plot II, Row F, Grave 16).

1



2



3

HIGHLIGHTS

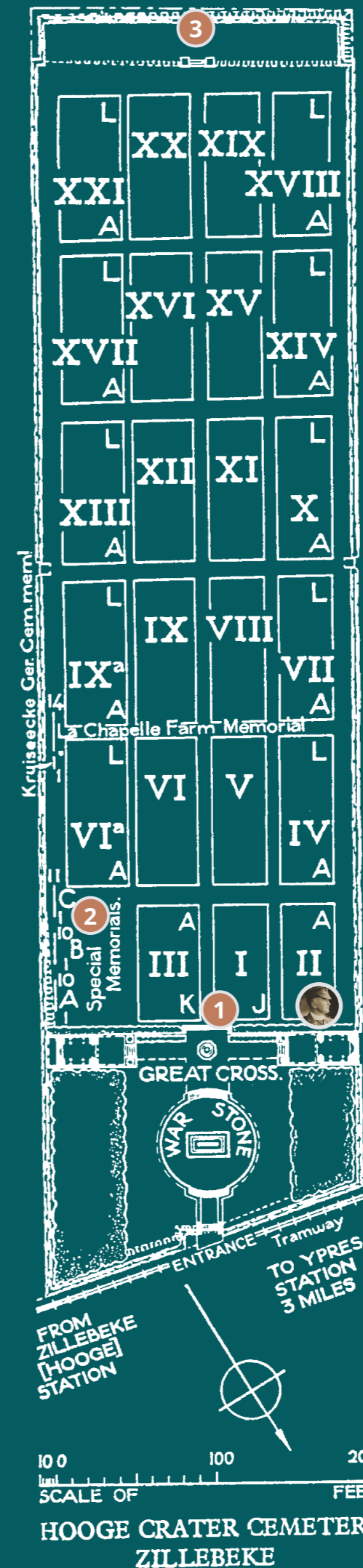
1 Pause to take in the Stone of Remembrance and its sunken 'mine crater' setting. Sit on the Cross of Sacrifice base to take in the view across the massed ranks of headstones that sweep away down the hillside.

There are several headstones in this cemetery that mark mass graves. You will find them throughout the plots, but in the rear two rows of Plot III, directly in front of the Cross, you will find a large group of these sobering markers.

2 Head into the open space at the front of the cemetery beside Plot III.

3 Head down into the cemetery. It is a fair distance down the hill but there is a platform designed for you at the bottom. From here turn and look back. The headstones are now facing you with the Cross of Sacrifice at the top of the hill. I'm sure you will agree that this view it was worth the walk.

There are only three plots at the front of the cemetery and a conspicuous space where perhaps one could have been placed. A German trench known to the British as Ignorance Trench ran right through here and caused soil conditions which made burials impossible.



ONLY THOSE WHO HAVE LOVED AND LOST KNOW THE PRICE THE WAR HAS COST

Inscription on the headstone of Private James Corbett, XVI. K. 1.

In the area
On the other side of the road one can find the well-visited Hoge Crater Museum. Near here is Sanctuary Wood and CWGC's Sanctuary Wood Cemetery.

Westtoer bike routes nearby
• Ieperboog
• Vredesfietsroute
• Frontroute 14-18

Westtoer walking routes nearby
• Het landschap als getuige

No step free access

Good parking

Seats present in cemetery